



# **PUBLIC NOTICE TRAFFIC PATTERN CHANGES**

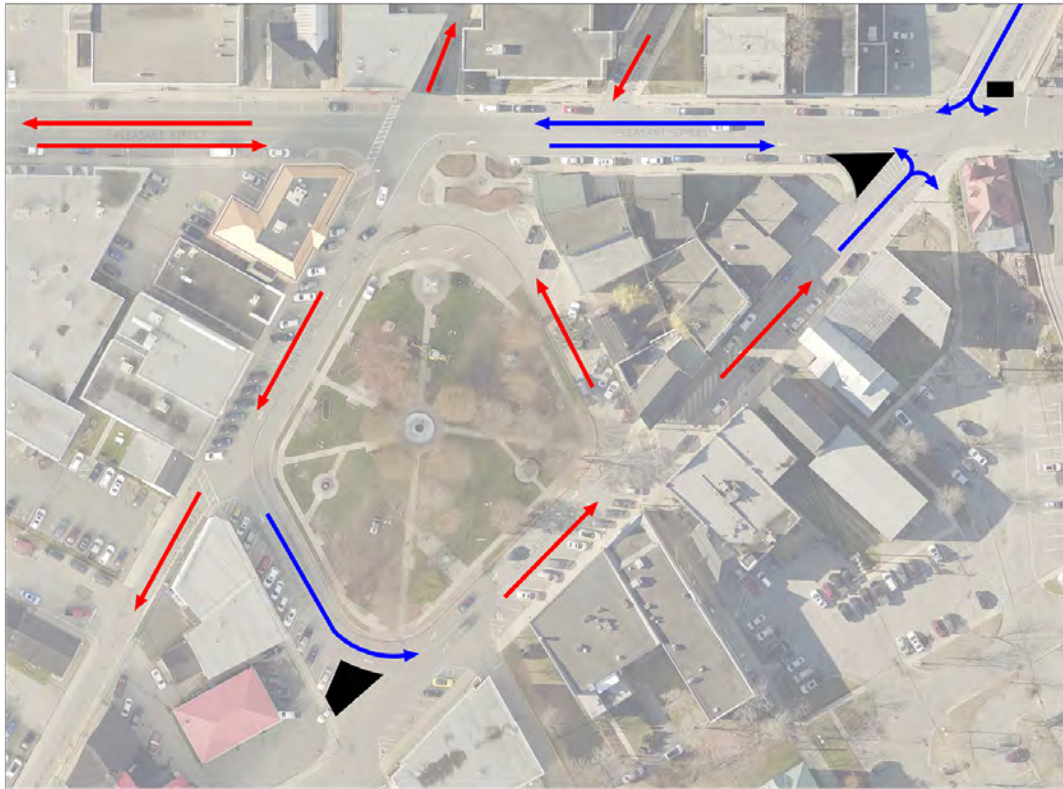
**2020-05-06**

The City of Miramichi wishes to advise residents of upcoming traffic interruptions in the former Town of Newcastle. Eastbound King George highway traffic will be detoured south on Jane street to Newcastle Boulevard, then onto Ledden street. At the top of Ledden street traffic will be able to continue east along King George Highway.

There will be no detour for westbound King George Highway traffic. Pleasant street will be change to 2-way traffic from Henry street to Newcastle Boulevard. Traffic from Jail street will be required to continue left around the square onto Newcastle Boulevard.

The traffic interruptions are required to allow for work to be completed at the Newcastle Boulevard and King George Highway Intersection. Additional information may be found on the city of Miramichi's website at [Miramichi.org](http://Miramichi.org)  
The City of Miramichi thanks you for your cooperation in this matter.

**Department of Engineering**  
506.623.2021



DOWNTOWN NEWCASTLE TRAFFIC CHANGES

